

STORM Slide Shower VST61R

Congratulations on your purchase of this high quality product from Voda Plumbingware. Please read the following before installation and retain (along with your receipt) for future reference.

TECHNICAL SPECIFICATIONS

Suitable for All Pressures

Minimum Pressure = 35kPa

Maximum operating Pressure = 500kPa* (As per NZ Building Code AS/NZ 3500.1)

Maximum operating Temperature = 65 deg. Celsius

For domestic use only.

CONFIGURATION

Mains Pressure systems Install the flow regulator as shown below.

This will comply with the Mains Pressure WELS rating.

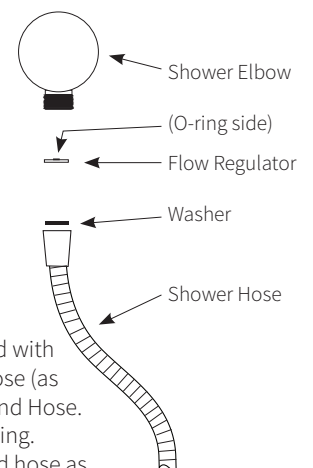
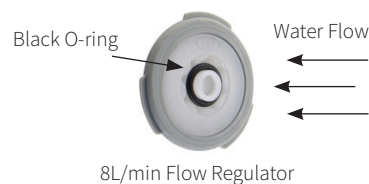
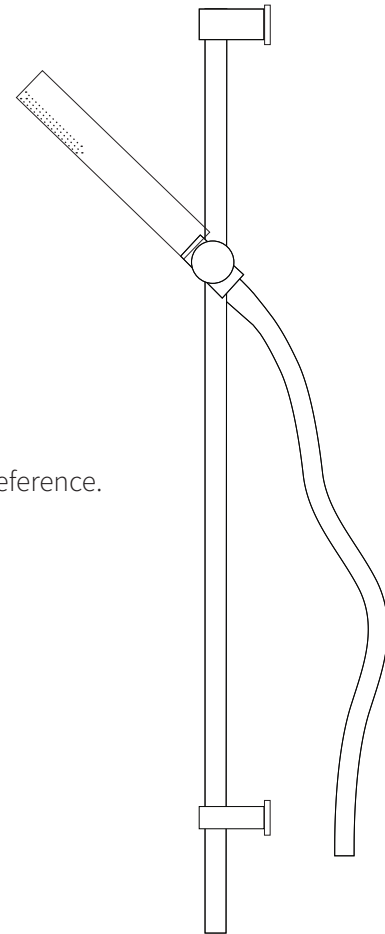
Unequal Low Systems Install as supplied.

Equal Low systems Install as supplied.

INSTALLATION

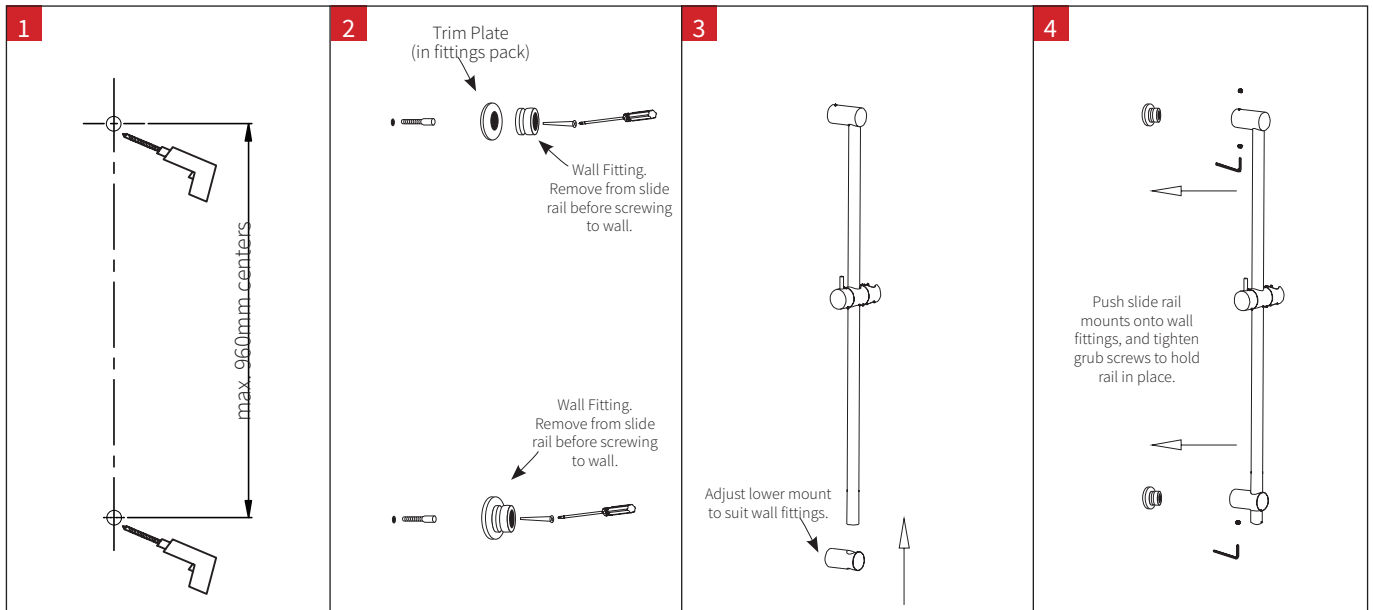
***FOR PRESSURES EXCEEDING 500kPa INSTALL A PRESSURE REDUCING VALVE. THOROUGHLY FLUSH ALL PIPES TO ELIMINATE ANY REMAINING DIRT AND RESIDUE, AND INSTALL INLINE FILTERS. FAILURE TO DO SO MAY VOID THE WARRANTY. TO BE INSTALLED AS PER THE REQUIREMENTS WITH AS/NZS 3500.**

- Refer diagram overleaf steps 1-4, see fittings pack for upper mounting trim plate, wall anchors, and screws.
- Lower mount can slide up and down rail depending on requirements. Internal grub screw on lower mount can be tightened once wall fittings are in place.



**Ensure the flow regulator is fitted with the O-ring facing away from the hose (as shown), between Shower Elbow and Hose. This will comply with the WELS rating. Do NOT fit between handpiece and hose as this can overpressurise the hose and cause premature failure of the shower hose.

ATTACH PROOF OF PURCHASE HERE



- Attach conical hose end with o-ring to handpiece and insert into slider mount.
- Attach the supply elbow to the supply connection on the wall, attach hose to supply elbow with flow regulator fitted if on mains pressure.
- Turn on water supply. Check for leaks.

CAUTION: If using your own screws to install the wall brackets, DO NOT use counter sunk type screws as this will void the warranty.

WARRANTY

PLEASE CALL US BEFORE REMOVING SHOWER OR UNDERTAKING ANY REPAIR WORK.

Please refer to our website for warranty information: www.vodaplumbingware.co.nz/warranty

In the unlikely event that this product fails during its warranty period, phone our Customer Service team immediately on 0508 367 366 – as unauthorised removal of the product may void the warranty.

CARE AND MAINTENANCE

SHOULD NOT BE CLEANED WITH ACIDIC, CAUSTIC/ALKALINE, ABRASIVE OR CITRIC CLEANERS.

A soft, damp cloth is recommended for cleaning (Not a Micro fibre cloth). Mild soap solutions can also be used on occasion.

See website for full care instructions: www.vodaplumbingware.co.nz/tapware-care-instructions/

PROUD PARTNER AND SUPPORTER OF MASTER PLUMBERS, GASFITTERS AND DRAINLAYERS

