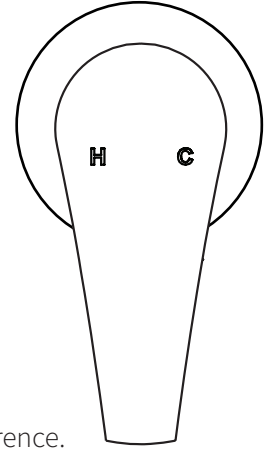


## ECOMIX Ultra Shower Mixer VECM32CH



Congratulations on your purchase of this high quality product from Voda Plumbingware. Please read the following before installation and retain (along with your receipt) for future reference.

### TECHNICAL SPECIFICATIONS

#### Suitable for All Pressures

Minimum Pressure = 35kPa

Maximum operating Pressure = 500kPa\* (As per NZ Building Code AS/NZ 3500.1)

Maximum operating Temperature = 65 deg. Celsius

For domestic use only.

### CONFIGURATION

Mains Pressure Systems Prior to installation, remove the valve inserts from both inlets.

Unequal Systems Install as supplied.

Important note: Only slide showers that are equipped with a large internal bore hose and open flow single function handset will work effectively with this shower mixer. We recommend this mixer be used with the EcoMix Slider Shower (VECM040) for optimum performance. If the cold pressure difference is greater than 10/1 ratio (i.e. 400kPa cold and 35kPa hot), or the hot/cold mix is temperamental, we recommend installing the supplied needle valve preferably directly to the cold water feed port on the shower mixer or alternatively anywhere on the cold feedline pipe.

Equal Low Systems Prior to installation, remove the valve inserts from both inlets.

### INSTALLATION

**\*FOR PRESSURES EXCEEDING 500kPa INSTALL A PRESSURE REDUCING VALVE. THOROUGHLY FLUSH ALL PIPES TO ELIMINATE ANY REMAINING DIRT AND RESIDUE, AND INSTALL INLINE FILTERS. FAILURE TO DO SO MAY VOID THE WARRANTY.**

Installation must comply with Section 5.4 of AS/NZS 3500 Standard with regard to Isolating stop cock use. Shower mixers must be water tested with the outlet open, to prevent damage to cartridge seals; due to back pressure.

All pipe work must be flushed prior to the installation of this mixer, accessible inline filters must be installed in the pipework for both the hot and cold inlet supply to prevent particles from damaging the ceramic cartridge.

ATTACH PROOF OF PURCHASE HERE

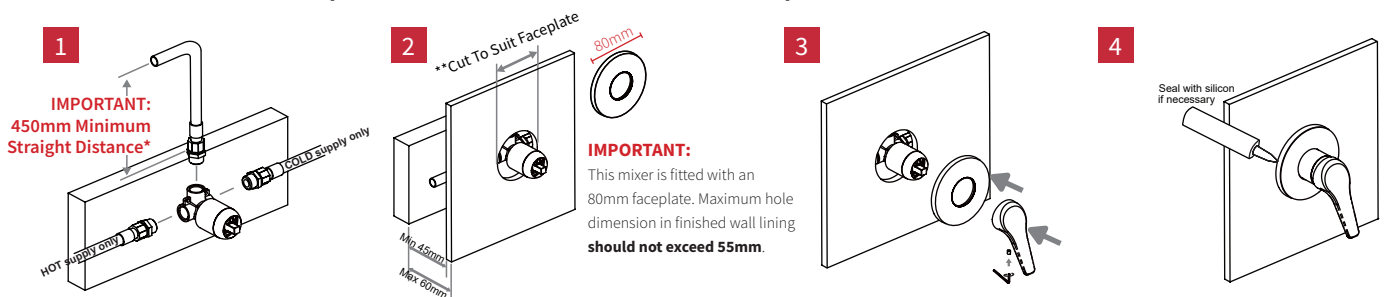
Back Flow Prevention: Where back flow prevention is required, install a Back Flow Prevention Valve at the supply elbow hose connection of the handpiece.

Any water seepage ex- the cartridge cavity opening can be stopped by retightening the large brass retaining nut.

For pressures exceeding 500kPa, install a pressure reducing valve. Failure to do so will void the warranty.

If you have performance issues please check there are no flow restrictors between the hose and the handpiece, or the hose and the shower elbow. If removing flow restrictors from hose, ensure a rubber washer is used in its place.

**Plumbers Note: Do not pressure test this mixer under static pressure.**



#### TROUBLESHOOTING

1. Is the lever between 7 and 8 O'clock? When installed correctly the lever should be close to 7 O'clock position, at 38°C, delivering about 6L per minute, where the relative hot/cold pressures are not greater than 10:1. **We recommend installing the supplied Needle Valve if there is a greater than 10/1 ratio of cold to hot kPa (The needle valve should be about an 1/8th turn open).**
2. If the lever is beyond 8 O'clock position, it is likely:
  - One or both of the valve inserts has been removed from the hot/cold ports;
  - The supply elbow has a restrictive bore (i.e. less than 10mm);
  - The supply hose has a bore size less than 9.5mm;
  - The handpiece is not a free-flow single function model
  - The WELs restrictor hasn't been removed
  - The Pressure reducing valve has not been readjusted (the feed valve on the LP Hot water cylinder should always be readjusted when installing a new mixer, because the head pressure drops over time. To readjust the Feed Valve (Pressure reducing valve) – turn the adjuster screw clockwise until the first drips appear from the relief pipe (protruding from the roof) or relief valve then back it off half-a-turn and re-secure the locking nut.
3. If the hot/cold mix is temperamental where the lever position is within 7-8 O'clock position, either the hot or cold pressures will just require a slight tweak.
4. Check that the hot and cold supply lines have not been incorrectly plumbed in, i.e. such as the cold supply connected to the hot inlet and hot supply connected to the cold inlet.
5. **\*When using with Unequal Low systems**, it needs to be remembered the requirement for **a minimum of 450mm of straight outlet pipe**, before any bends.

#### WARRANTY

**PLEASE CALL US BEFORE REMOVING OR UNDERTAKING ANY REPAIR WORK.**

Please refer to our website for warranty information: [www.vodaplumbingware.co.nz/warranty](http://www.vodaplumbingware.co.nz/warranty)

In the unlikely event that this product fails during its warranty period, phone our Customer Service team immediately on 0508 367 366 – as unauthorised removal of the product may void the warranty.

#### CARE AND MAINTENANCE

**SHOULD NOT BE CLEANED WITH ACIDIC, CAUSTIC/ALKALINE, ABRASIVE OR CITRIC CLEANERS.**

A soft, damp cloth is recommended for cleaning (Not a Micro fibre cloth). Mild soap solutions can also be used on occasion. See website for full care instructions: [www.vodaplumbingware.co.nz/tapware-care-instructions/](http://www.vodaplumbingware.co.nz/tapware-care-instructions/)